

NIAGARA REGION WIND FARM PROJECT



Community Liaison Committee Meeting 3 | October 25, 2016

AGENDA

- **Introductions & Meeting Structure Outline**
- **Review of Minutes – CLC Meeting #2**
- **Project Update**
- **Topics of Community Interest**
- **Moving Forward**



REVIEW OF MINUTES

CLC MEETING #2

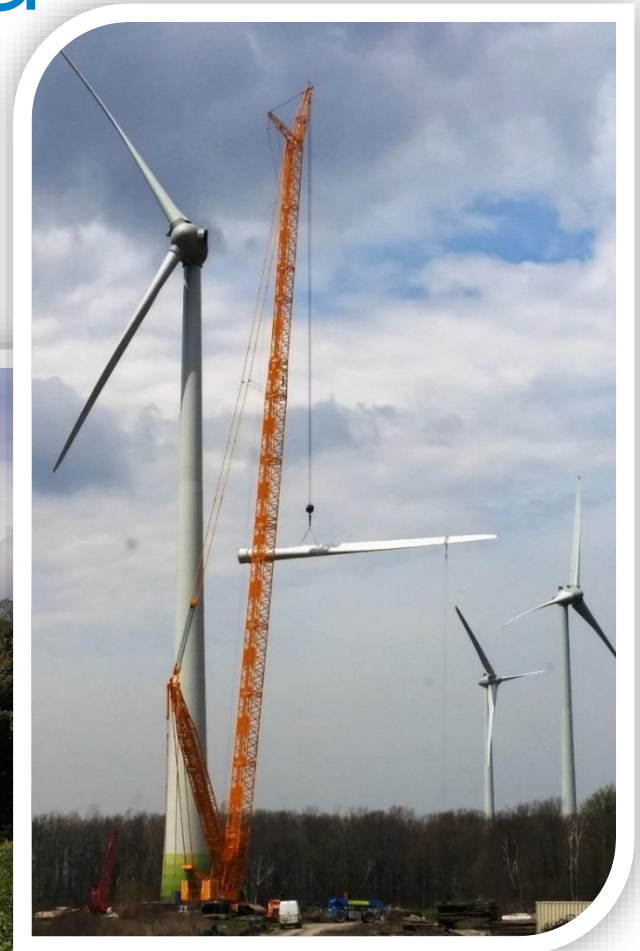


PROJECT UPDATE

- Work Completed
- Work Ongoing
- Next steps

Work completed

- Turbine Installation
- Turbine site reclamation



Work completed

- Collector system



Work completed

- Transmission line
- Substations & Interconnect station



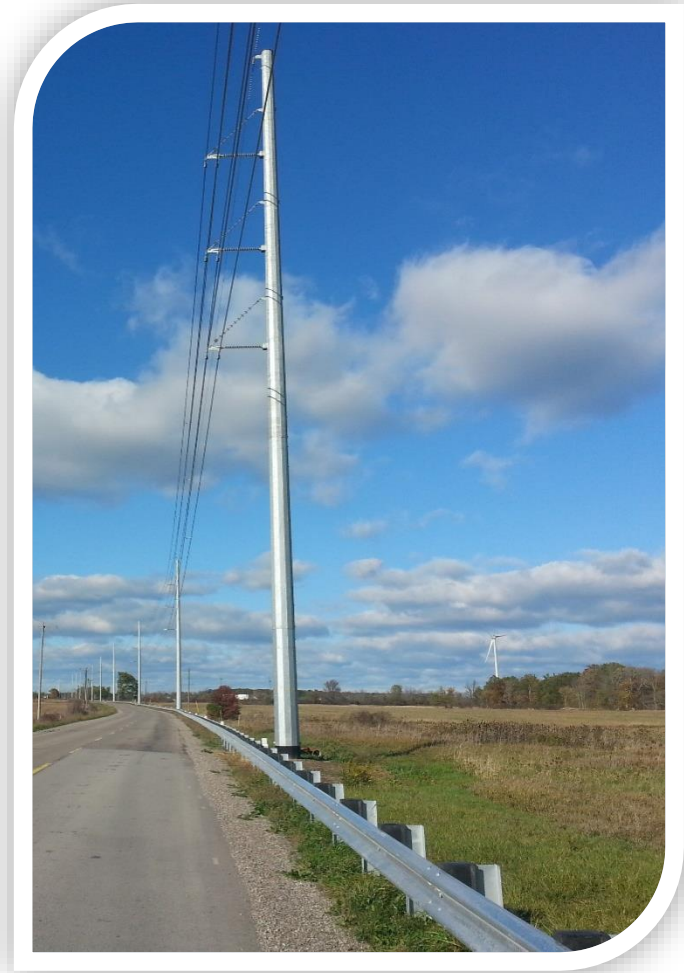
Work ongoing

- Turbine commissioning
- Substation & Interconnect SCADA testing/fine-tuning



Work ongoing

- ROW remediation: re-ditching, guiderail installation, etc.



Next Steps

- Full Turbine Energization
- Operations



Topics of Community Interest

- Contacting NRWF with Questions and Concerns
- Stats from the NRWF website & CLC ad
 - Job creation, community investment
- Productivity and capacity of Wind Farm
- Guiderail installation
- Tree replacement plans
- Water wells
- Project decommissioning

Contacting NRW with Questions & Concerns

Your Questions and Concerns are welcomed

- Complaints are logged and tracked
 - NRW must report all environmental complaints to the MOECC
- Complainants will receive an acknowledgement within 48 hours

To contact the Niagara Region Wind Farm:

- *Phone:* 1-844-363-6491
- *Email:* info@nrwf.ca
- *Website:* www.nrwf.ca



Stats from the NRWF website and CLC Advertisement

The CLC advertisement featured statistics also found on the NRWF website. Several community members were interested in learning more about:

- Job creation
 - The NRWF project employed over 700 people during the construction phase
 - Long-term jobs are created through direct employment with the Operations team including maintenance, monitoring and other support roles and indirect employment opportunities including jobs created at three tower and component manufacturing facilities
- Community Investment
 - NRWF will spend in excess of \$80 million during the lifetime of the project on such items as taxes, local contractors, land lease agreements, etc.

Productivity and Capacity of the Niagara Region Wind Farm

There is community interest in how much power will be generated by the wind farm vs. capacity of the project.

- Electricity Generation:
 - NRWF will generate electricity more than 90% of the time
 - NRWF will be producing name plate capacity more than 30% of the time
 - The project is only paid for the power it actually produces

Guiderail Installation

Community members have questions and concerns about the quantity and locations of guiderail installed throughout the project area

- Guiderail installation is a safety measure to protect motorists which is required by applicable guidelines and enforced by the Road Authority
- The guiderail installed by the project was designed, reviewed and stamped by a licensed Engineer in the province of Ontario

Guiderail Installation (continued)

- Locations where guiderail is necessary are determined based on distance between travelled road & pole placement, and vehicular speed limits
- Transmission pole placement was based upon approval by the permit issuing authorities
 - Province
 - Niagara Region
 - Municipal government



Tree Replacement Plans

Community members have asked for an update on the project's plans to replace trees which were removed during construction

- Tree replacement commitments to each municipality and region are set out in individual Road Usage Agreements (RUAs)
- Implementation plans are being discussed with municipalities and once finalized, NRW will share details via the project's website www.nrwf.ca





Water wells

Some questions regarding residential water wells have been raised.

- As per the project's REA approval, both pre- & post-construction groundwater monitoring must be done and annual reports submitted to the MOECC District Manager
 - Home owners in prescribed zones were approached by mail and door-to-door in 2015 and pre-construction samples taken and analyzed from any who elected to participate
 - Post-construction sampling has commenced proximal to the T-line and will commence in 2017 for homes proximal to turbines
 - Final samples will be taken in 2018 and reports submitted to MOECC

Decommissioning the NRW Project

The community is interested in how the turbines will be taken down and what materials can be recycled

- Specifics of decommissioning are outlined in the REA Decommissioning report available on the project's website
 - The main sources of salvage material are concrete, steel, copper, fibreglass and plastic, which may be sold to recycling facilities. All non-salvageable components will be processed and safely transported to an MOECC approved disposal facility.





DISCUSSION & QUESTIONS

Moving forward



- Meeting minutes will be available online in '*Community Liaison Committee Documents*'
<http://www.nrwf.ca/project/>
- Next CLC meeting date to be set

Thank you!

Your attendance and participation is valuable and appreciated.

To contact the Niagara Region Wind Farm:

- *Phone:* 1-855-363-6491
- *Email:* info@nrwf.ca
- *Website:* www.nrwf.ca



APPENDIX

- CLC Ad

COMMUNITY LIAISON COMMITTEE MEETING **3** NIAGARA REGION WIND FARM



Tuesday October 25, 2016 | 6pm
Wellandport Community Centre
5042 Canborough Road
Wellandport, ON L0R2J0

The purpose of the CLC is to facilitate two-way communication between NRWF and CLC members with respect to issues relating to the construction, installation, use, operation, maintenance and retirement of the facility. All CLC meetings are open to the general public for observation.

Questions can be submitted in advance up until October 14th to Karla Kolli, CLC Chair and Facilitator at kkolli@dillon.ca or **416-229-4647 ext. 2354**.

For more information about the project please visit the website at: www.nrwf.ca

77 turbines

230 MW

80 M dollars invested

700 new jobs created during project development

100 long-term jobs during the operating life of the wind power project