

## **11.0 Images**

---

**Stantec**

**NIAGARA REGION WIND PROJECT  
STAGE 2 ARCHAEOLOGICAL ASSESSMENT**

Images  
April 2013

---



Photo 1: Access road for SE91 highlighting field conditions during survey.



Photo 2: Access road for SE91 highlighting field conditions during survey.



Photo 3: Isolated scraper fragment from SE 91.



Photo 4: Crew conducting intensification of find spot at SE 101.



Photo 5: Field conditions at SE 101 during survey.



Photo 6: Field conditions at SE 107 during survey.





Photo 7: Field conditions of access road at SE 107 during survey.



Photo 8: Low and wet woodlot at SE 106, SE D, SE94-1.



Photo 9: Low and wet woodlot at SE 106, SE D, SE94-1.



Photo 10: Field conditions at SE 106, SE D, SE 94-1 during survey.



Photo 11: Field crew conducting pedestrian survey of SE 106, SE D, SE 94-1.



Photo 12: Field conditions at SE 57 during survey.



Client/Project  
Niagara Region Wind Corporation  
Niagara Region Wind Project

Date  
2013-04-01

Project No.  
160950269

Title  
PHOTOGRAPHIC RECORD

Page  
Page 2 of  
16



Photo 13: Field conditions during survey of SE 52.



Photo 14: Field crew conducting pedestrian survey at SE 36.



Photo 15: Isolated projectile point recorded during survey of SE 36.



Photo 16: Field crew recording archaeological site at SE 37.



Photo 17: View north from old project component access road at SE 37.



Photo 18: Field crew conducting intensification of CL 26 at SE 62.



Client/Project  
Niagara Region Wind Corporation  
Niagara Region Wind Project

Date  
2013-04-01

Project No.  
160950269

Title  
PHOTOGRAPHIC RECORD

Page  
Page 3 of  
16



Photo 19: Field crew conducting pedestrian survey at SE 51.



Photo 20: Field crew conducting pedestrian survey at SE 39.



Photo 21: Projectile point recorded and collected during survey of SE 39.



Photo 22: Field crew conducting survey at SE 83.



Photo 23: Field conditions during survey of SE 90.



Photo 24: Field conditions during survey of SE 117.



Client/Project  
 Niagara Region Wind Corporation  
 Niagara Region Wind Project

Date  
 2013-04-01

Project No.  
 160950269

Title  
 PHOTOGRAPHIC RECORD

Page  
 Page 4 of  
 16



Photo 25: Low and wet woodlot not surveyed at SE 26.



Photo 26: Field conditions during survey of SE 26.



Photo 27: Field conditions during survey of SE 24.



Photo 28: Projectile point recorded and collected from SE 24.



Photo 29: Field crew recording find spot during survey of SE 24.



Photo 30: Field conditions during survey of SE 45.





Photo 31: Field conditions during survey of SE 45.



Photo 32: Field conditions during survey of SE 29-4.



Photo 33: Field conditions during survey of SE 29-4.



Photo 34: Field conditions during survey of SE 29-5.



Photo 35: Field conditions during survey of the access road of SE 14.



Photo 36: Field conditions during survey at SE 14.







Photo 37: Field conditions during test pit survey of SE 1.



Photo 38: Field conditions during survey of SE 13.



Photo 39: Field conditions during survey of SE 55.



Photo 40: Field crew conducting test pit survey of SE 27, SE 2.



Photo 41: Low and wet stream not surveyed at SE 26 (7A).



Photo 42: Field conditions during survey of SE 26 (7A).





Photo 43: Field crew conducting pedestrian survey at SE4; barn and disturbed gravel roadway visible.



Photo 44: Field conditions during survey of SE 16 (5E).



Photo 45: Field crew conducting pedestrian survey of SE 16 (5D).



Photo 46: Field conditions during survey of SE 16 (5ABC).



Photo 47: Field crew conducting pedestrian survey at SE 16 (5ABC).



Photo 48: Field crew conducting pedestrian survey at SE 11 (12B)





Photo 49: Test pit from SE 35 (10H).



Photo 50: Field crew conducting test pit survey at SE 23.



Photo 51: Field conditions during survey of SE 48.



Photo 52: Field conditions during survey of SE 17.



Photo 53: Field conditions during survey of SE 17.



Photo 54: Field crew conducting test pit survey of SE 27 (18B).





Photo 55: Low and wet area in woodlot not tested at SE 27 (18B).



Photo 56: Field conditions during survey of SE 27 (18C)



Photo 57: Field crew conducting pedestrian survey of SE 11.



Photo 58: Field crew conducting pedestrian survey of SE 60.



Photo 59: Test pit from survey of SE 59-2.



Photo 60: Field crew conducting pedestrian survey of SE 35.





Photo 61: Field conditions of SE 21, SE 22.



Photo 62: Field crew conducting pedestrian survey of SE 3 (1H).



Photo 63: Field crew recording find spot at SE 3 (1H).



Photo 64: Low and wet area (pond) not surveyed at SE 20 (14C).



Photo 65: Field conditions during survey of SE 20 (14D).



Photo 66: Steep slope at SE 112, from SE 3 (1H).





Photo 67: Field conditions during survey of SE 113.



Photo 68: Field crew conducting pedestrian survey of SE 113; barn disturbance visible.



Photo 69: Field conditions during survey of SE 44.



Photo 70: Field conditions during survey of SE 18.



Photo 71: Field conditions during survey of SE 18, SE 110.



Photo 72: Field crew conducting pedestrian survey of SE 82.





Photo 73: Field conditions during survey of SE 89.



Photo 74: Field conditions during survey of SE 70.



Photo 75: Field conditions during survey of SE 102 7.



Photo 76: Field conditions during survey of SE 87.



Photo 77: Field conditions during survey of SE 108.



Photo 78: Field conditions during survey of SE 108.



Client/Project  
 Niagara Region Wind Corporation  
 Niagara Region Wind Project

Date  
 2013-04-01

Project No.  
 160950269

Title  
 PHOTOGRAPHIC RECORD

Page  
 Page 13 of  
 16



Photo 79: Field crew conducting survey of SE 108.



Photo 80: Artifact recorded and collected from SE 108.



Photo 81: Field crew conducting pedestrian survey of 102 4.



Photo 82: Field crew conducting test pit survey of SE 116.



Photo 83: Field crew conducting pedestrian survey of SE 114.



Photo 84: Field crew recording find spot at SE 119.







Photo 85: Field crew conducting pedestrian survey at SE 115.



Photo 86: Field conditions during survey of SE 105.



Photo 87: Field conditions during survey of SE 49-4.



Photo 88: Field conditions during survey of SE 49-1.



Photo 89: Field conditions during survey of SE 79.



Photo 90: Field conditions during survey of SE 77(2).



Client/Project  
Niagara Region Wind Corporation  
Niagara Region Wind Project

Date  
2013-04-01

Project No.  
160950269

Title  
PHOTOGRAPHIC RECORD

Page  
Page 15 of  
16



Photo 91: Field conditions during survey of SE 77(1)



Photo 92: Field conditions during survey of SE 77(3)



Photo 93: Field conditions during survey of SE 53.



Photo 94: Field crew conducting test pit survey of Tie-in.



Photo 95: Detail of test pit from Tie-in.



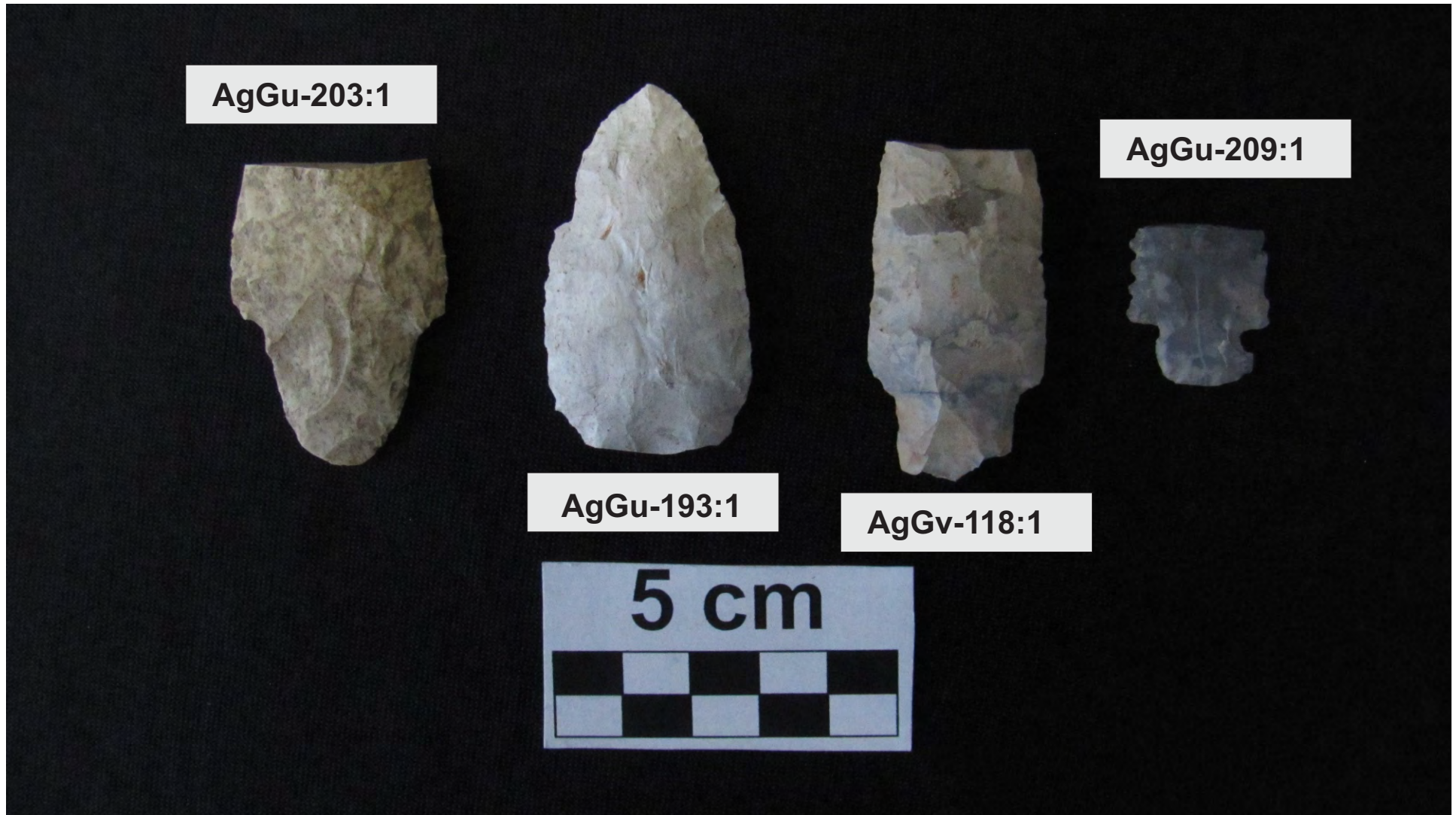


Plate 1 - Projectile Points

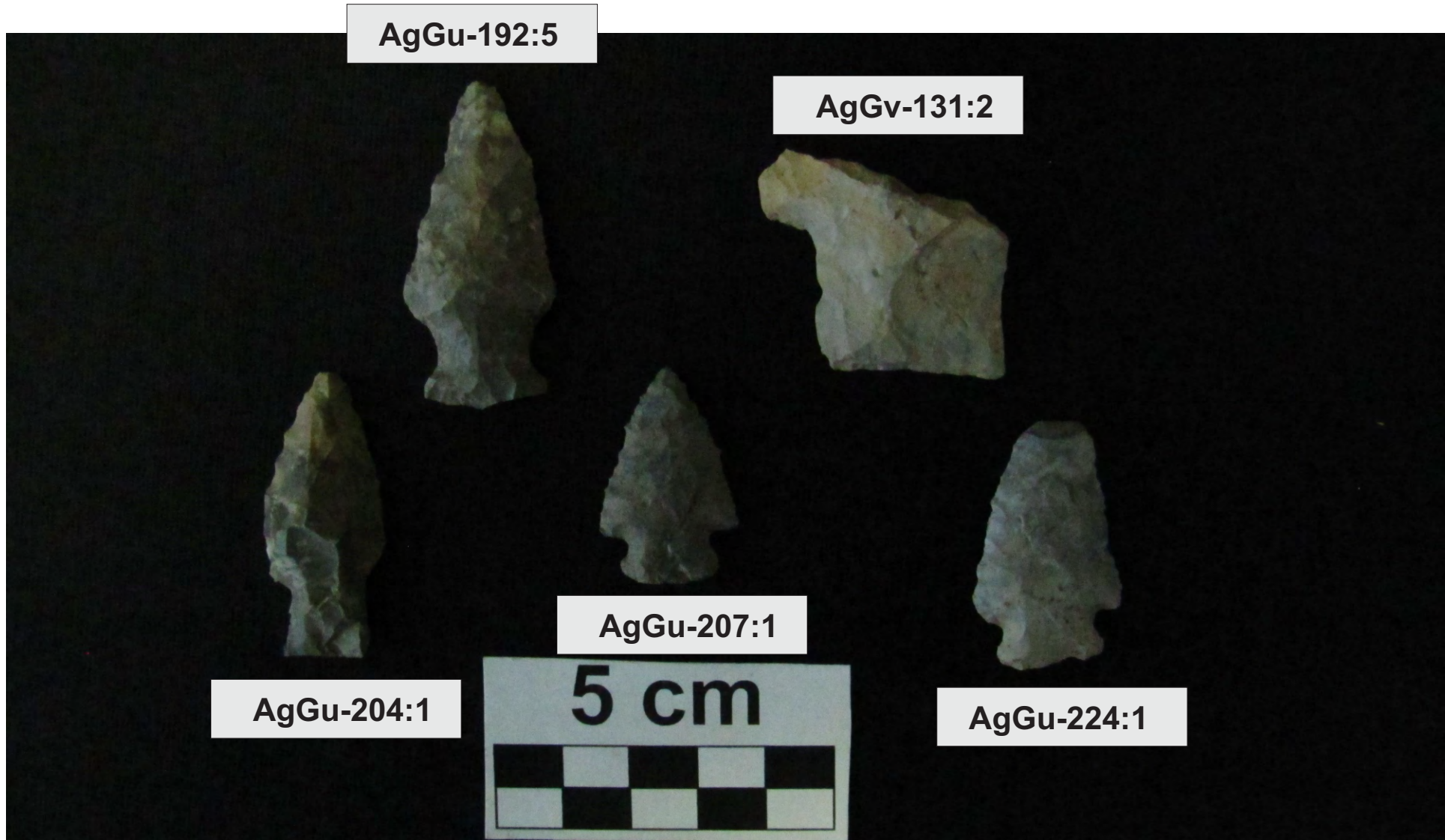


Plate 2 - Projectile Points



Plate 3 - Projectile Points



Plate 4 - Projectile Points



Plate 5 - Projectile Points







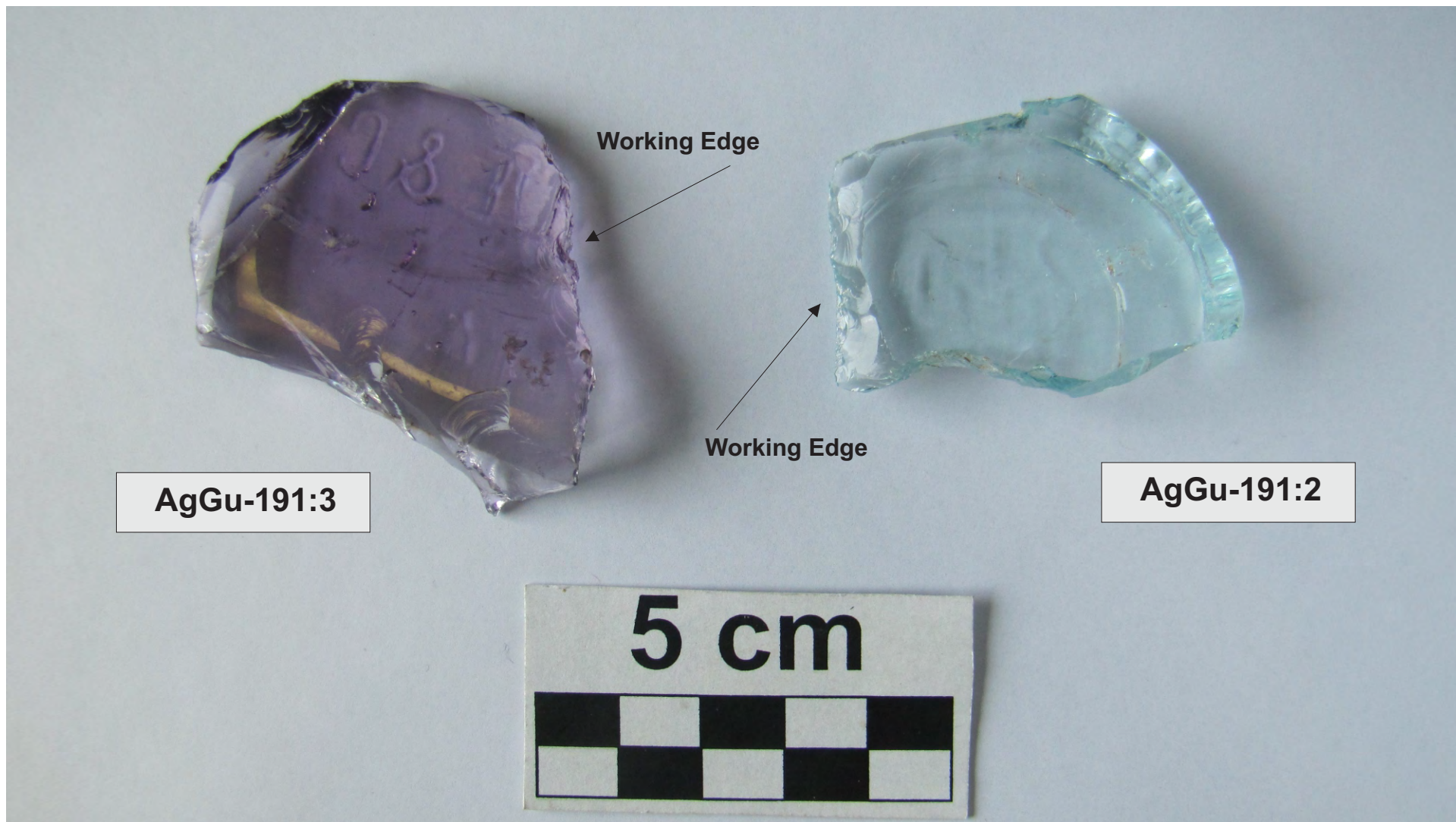
Plate 7 - Decorated Ceramics and Projectile Point 14, AgGu-189



Plate 8 - Historic Ceramics from AgGu-218



Plate 9 - Pre-contact Artifacts



AgGu-191:3

AgGu-191:2

5 cm

Plate 10 - Glass Scrapers from AgGu-191

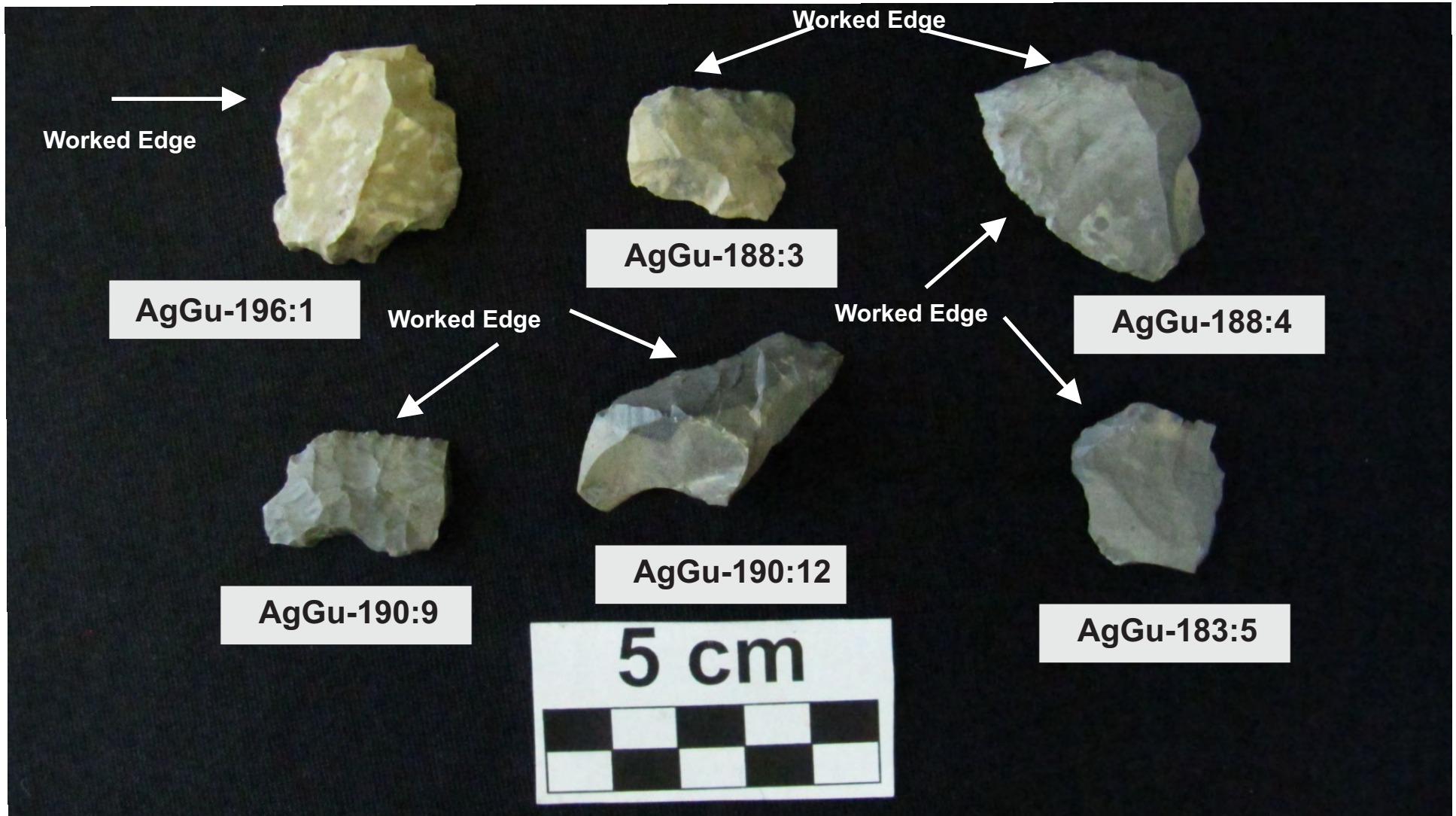


Plate 11 - Scrapers



Plate 12 - Scrapers

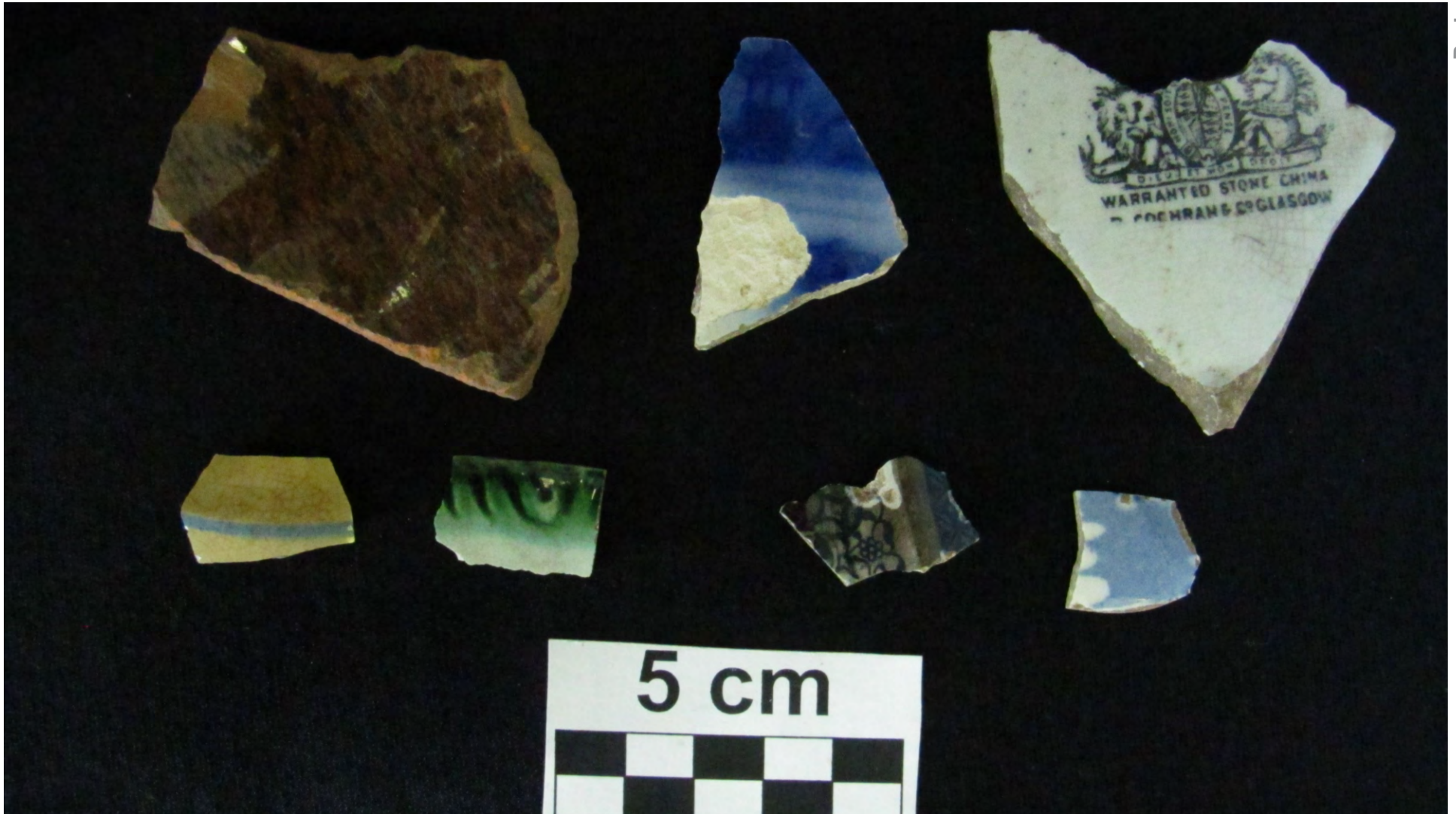


Plate 13 - Historic Ceramics from AfGv-135





**Stantec**

**NIAGARA REGION WIND PROJECT**  
STAGE 2 ARCHAEOLOGICAL ASSESSMENT

# **Appendix A**

List of Registered Archaeological Sites Within the Study Area

**Stantec**

**NIAGARA REGION WIND PROJECT**

**STAGE 2 ARCHAEOLOGICAL ASSESSMENT**

**NIAGARA REGION WIND PROJECT  
STAGE 2 ARCHAEOLOGICAL ASSESSMENT**

#	Site	Easting	Northing	Culture(s) Represented on Site
1	AfGv-29	618300	4760200	A
2	AfGv-28	618300	4760500	A
3	AfGv-27	618350	4760200	NR
4	AfGv-64	618300	4759900	NR
5	AfGv-63	617000	4760400	NR
6	AfGv-66	617700	4760200	NR
7	AfGv-67	618100	4760000	NR
8	AfGv-70	619300	4759850	EW
9	AgGu-29	626,240	4765450	EC
10	AgGu-5	625,700	4762900	LW
11	AgGu-8	623900	4770700	UD
12	AgGu-9	625300	4770700	UD
13	AgGu-22	629,176	4762330	EW,MW,LW,LA
14	AgGu-44	634050	4765250	EA, LA
15	AgGu-45	634000	4765150	EW, MW, LA
16	AgGu-48	633790	4765290	EC, EW, MW
17	AgGu-49	633795	4765285	UD
18	AgGu-50	633600	4765300	MA, EW, MW, EC
19	AgGu-51	633800	4765310	UD
20	AgGu-52	633900	4765200	W
21	AgGu-53	634050	4765050	UD
22	AgGu-54	633800	4765290	EA
23	AgGu-55	622350	4770600	UD
24	AgGu-46	633800	4765200	MA
25	AgGu-47	633810	4765300	UD
26	AgGu-23	625500	4762800	LA
27	AgGu-56	622350	4770500	LA, EW, LW, PC
28	AgGu-57	622300	4770600	UD
29	AgGu-61	624300	4778800	LA
30	AgGu-62	624300	4778900	EC
31	AgGu-58	622400	4770750	UD
32	AgGu-59	623300	4779900	UD
33	AgGu-60	624200	4778750	MA
34	AgGu-69	634180	4765411	MA
35	AgGu-24	626100	4777950	UD
36	AgGu-25	625430	4765020	LA
37	AgGu-26	626150	4765850	LA

**KEY**

Early Palaeo-Indian	EPI
Late Palaeo-Indian	LPI
Early Archaic	EA
Middle Archaic	MA
Late Archaic	LA
Indeterminate Archaic	A
Early Woodland	EW
Middle Woodland	MW
Late Woodland	LW
Indeterminate Woodland	W
Euro-Canadian	EC
Indeterminate Pre-Contact	UD
Not recorded	NR

**NIAGARA REGION WIND PROJECT**  
**STAGE 2 ARCHAEOLOGICAL ASSESSMENT**

38	AgGu-27	626130	4765800	UD
39	AgGu-28	626200	4765800	EA
40	AgGu-43	623290	4762220	UD
41	AgGu-67	634281	4765441	LPI,EA, MA
42	AgGu-68	634240	4765468	MA
43	AgGv-2	619250	4762730	LW
44	AgGu-32	625800	4766190	UD
45	AgGu-135	623120	4779090	LPI, A
46	AgGu-139	623150	4769750	UD
47	AgGu-141	623700	4769700	UD
48	AgGv-7	617870	4762820	EC
49	AgGu-134	623095	4779035	LPI, A
50	AgGv-10	619370	4762700	UD
51	AgGv-11	619510	4762710	LW
52	AgGv-8	619400	4762650	UD
53	AgGv-13	617900	4762040	UD
54	AgGv-14	618100	4761760	UD
55	AgGv-9	619200	4762600	UD
56	AgGv-16	619110	4762780	UD
57	AgGv-17	618100	4763120	UD
58	AgGv-12	618150	4763220	EC
59	AgGv-19	618960	4763100	UD
60	AgGv-15	619150	4762650	UD
61	AgGu-142	623900	4769700	UD
62	AgGu-143	623950	4769700	UD
63	AgGv-21	618940	4763200	UD
64	AgGv-20	618950	4763150	UD
65	AgGv-25	618360	4762970	UD
66	AgGv-26	618350	4763150	A
67	AgGv-27	618300	4763000	EW, MW
68	AgGv-22	618500	4763220	UD
69	AgGv-18	618980	4763020	LW
70	AgGv-29	618260	4763000	LA
71	AgGv-31	618360	4762950	UD
72	AgGv-32	618350	4762900	UD
73	AgGv-28	618350	4763010	W
74	AgGv-34	618310	4762900	UD
75	AgGv-35	618910	4762370	EC
76	AgGv-36	618610	4762100	UD

**NIAGARA REGION WIND PROJECT**  
**STAGE 2 ARCHAEOLOGICAL ASSESSMENT**

77	AgGv-37	618540	4762120	UD
78	AgGv-38	617930	4762970	UD
79	AgGv-39	618000	4762980	LA
80	AgGv-40	618090	4762900	UD
81	AgGv-41	618140	4762980	UD
82	AgGv-33	618360	4763020	W
83	AgGv-42	617990	4763040	UD
84	AgGv-44	618220	4762250	UD
85	AgGv-45	618440	4761820	UD
86	AgGv-50	616500	4776650	UD
87	AgGv-43	618400	4762010	UD
88	AgGv-30	618330	4762950	UD
89	AgGv-23	618460	4763230	UD
90	AgGv-24	618210	4763010	UD
91	AgGu-144	624100	4769700	EC
92	AgGu-145	625200	4769750	UD
93	AgGv-54	618900	4771900	UD
94	AgGv-52	620900	4775140	LA, LW
95	AgGv-55	616,300	4771775	EA
96	AgGv-61	430512	793212	UD
97	AgGv-62	430517	793218	UD
98	AgGv-66	617501	4772708	EA
99	AgGv-67	617555	4772740	EA
100	AgGv-68	617585	4772726	UD
101	AgGv-69	617610	4772598	LA
102	AgGv-65	617465	4772757	UD
103	AgGv-71	617437	4772427	UD
104	AgGv-70	617584	4772521	LW
105	AgGv-73	617382	4772467	UD
106	AgGv-74	617378	4772581	EW
107	AgGv-75	617433	4772641	UD
108	AgGv-76	617393	4772755	UD
109	AgGv-72	617622	4772547	EA
110	AgGv-86	430535	793325	LA
111	AgGv-87	616100	4769500	UD
112	AgGv-88	615600	4769500	UD
113	AgGv-89	614300	4769400	EC
114	AgGv-56	616450	4771250	UD
115	AgGv-100	618700	4769600	EC, UD

**NIAGARA REGION WIND PROJECT**  
**STAGE 2 ARCHAEOLOGICAL ASSESSMENT**

116	AgGv-77	617601	4772792	UD
117	AgGv-101	619100	4769600	UD
118	AgGv-105	621350	4769600	UD
119	AgGv-106	621200	4769600	UD
120	AgGv-108	621700	4769600	UD
121	AgGv-109	621500	4769600	UD
122	AgGv-107	621800	4769600	UD
123	AhGv-2	619300	4781100	NR
124	AgGv-104	619800	4769550	UD
125	AgGv-57	616450	4771850	UD
126	AhGv-14	618990	4781940	UD
127	AgGv-58	616550	4771775	LA
128	AhGv-16	618900	4782000	UD
129	AhGv-8	618650	4782300	EC
130	AhGv-6	618500	4782000	UD
131	AgGv-59	621650	4774800	UD
132	AhGu-4	624130	4781720	UD
133	AhGv-19	618884	4781858	UD
134	AhGv-26	620501	4782076	UD
135	AhGv-27	618483	4783073	UD
136	AhGv-28	618365	4783088	UD
137	AhGv-29	431154	793228	UD
138	AhGv-24	618900	4782750	MW, LW
139	AhGv-30	431152	793227	UD
140	AhGv-36	619377	4782355	UD
141	AhGv-38	619374	4782474	UD
142	AhGv-39	619427	4782467	UD
143	AhGv-40	619356	4782357	UD
144	AhGv-41	619316	4782536	UD
145	AhGv-42	619425	4782519	UD
146	AgGu-65	623200	4779300	UD
147	AgGu-66	623150	4779550	UD
148	AgGu-173	430142	792058	UD
149	AgGu-174	430150	792058	UD
150	AgGu-175	430141	792102	UD
151	AgGv-4	619580	4762760	UD
152	AgGv-5	619590	4762600	UD
153	AhGv-37	619377	4782418	UD
154	AhGv-18	618775	4781724	UD

**NIAGARA REGION WIND PROJECT****STAGE 2 ARCHAEOLOGICAL ASSESSMENT**

155	AhGv-15	618820	4782050	UD
156	AhGv-17	619050	4782100	UD
157	AhGv-25	619896	4782137	LA
158	AgGv-60	430514	793224	UD
159	AgGu-147	625200	4770150	UD
160	AgGu-140	623150	4569650	EA
161	AgGu-63	623450	4779150	LW
162	AgGv-3	619580	4762820	UD
163	AgGu-64	623400	4779200	LW
164	AgGv-6	619400	4762600	UD
165	AgGu-3	622500	4771400	LW
166	AfGu-49	635100	4759200	NR

**Stantec**

**NIAGARA REGION WIND PROJECT**

**STAGE 2 ARCHAEOLOGICAL ASSESSMENT**



**Stantec**

**NIAGARA REGION WIND PROJECT**  
STAGE 2 ARCHAEOLOGICAL ASSESSMENT

# **Appendix B**

Artifact Catalogues

**Stantec**

**NIAGARA REGION WIND PROJECT**

**STAGE 2 ARCHAEOLOGICAL ASSESSMENT**

































PROVENIENCE				ARTIFACT DESCRIPTION	Date	lithic
Borden #	Catalogue #	Lot	# Pieces			
AgGu-184	0001	Surface	5	Flakes, secondary	May 16, 2012	Onondaga chert
AgGu-184	0002	Surface	16	Flakes, tertiary	May 16, 2012	Onondaga chert
AgGu-184	0003	Surface	1	Core	May 16, 2012	Onondaga chert
AgGu-184	0004	Surface	1	Biface fragment L: 36mm, W: 28mm, T: 9mm, WE: 23mm	May 16, 2012	Onondaga chert
AgGu-184	0005	Surface	1	Drill fragment L: 41mm, W: 19mm, T: 8mm	May 16, 2012	Onondaga chert
AgGu-184	0006	Surface	1	Projectile point fragment. Missing tip and base. Unknown style. L: 21mm, W: 23mm, T: 9mm.	May 16, 2012	Onondaga chert
AgGu-184	0007	Surface	1	Drill fragment L: 22.5mm, W: 11mm, T: 7.5mm	May 16, 2012	Onondaga chert
AgGu-184	0008	Surface	1	Glass fragment, brown beer bottle	May 16, 2012	
AgGu-184	0009	Surface	1	Earthenware fragment. Coarse redware with opaque brown glaze with black.	May 16, 2012	
AgGu-184	0010	Surface	6	Clay pipe fragments. 4 stems fragments (1 plain, 2 stamped "Glasgow", and 1 stamped "c". 2 bowl fragments. 1 stamped "T D" - 19th century.	May 16, 2012	
AgGu-184	0011	Surface	2	Buttons, shell, white, disc shape, 4 hole sew through style	May 16, 2012	
AgGu-184	0012	Surface	1	Nail, square, c. 1820-1910, L: 48mm, W: 9mm, T: 5mm	May 16, 2012	
AgGu-184	0013	Surface	1	Glass, triangular bottle base fragment. Brown. Stamped "B", and "4", and "D" in a diamond	May 16, 2012	
AgGu-184	0014	Surface	4	Glass, bottle fragments. Transparent aquamarine colour. One neck - no seams. Two base fragments, one with "LTON ON" embossed on it, and one side fragment with an embossed flower pattern	May 16, 2012	
AgGu-184	0015	Surface	1	Glass fragment, transparent yellow. Possibly from a dish with base.	May 16, 2012	
AgGu-184	0016	Surface	3	Glass bottle and two bottle fragments. Sun purpled. Late 19th to early 20th century	May 16, 2012	
AgGu-184	0017	Surface	1	Glass, bottle base fragment. Colourless. Cross hatching decoration on base	May 16, 2012	
AgGu-184	0018	Surface	3	Glass fragments, flat. One transparent brown, one cobalt blue and one cornflower blue.	May 16, 2012	
AgGu-184	0019	Surface	1	Yellow ware fragment. C. 1840- present.	May 16, 2012	
AgGu-184	0020	Surface	3	White Refined Earthenware fragments. Flow blue c. 1845+, One fragment with gilding, c. 1870+	May 16, 2012	
AgGu-184	0021	Surface	1	White Refined Earthenware fragment. Hand painted blue colour.	May 16, 2012	
AgGu-184	0022	Surface	1	Earthenware fragment. Refined. Ironstone. White. Wood & Sons Ltd maker's mark 1910+	May 16, 2012	
AgGu-184	0023	Surface	1	White Refined Earthenware fragment. Black transfer print. Registration mark 1872.	May 16, 2012	
AgGu-184	0024	Surface	1	White Refined Earthenware fragment. Hand pained brown wavy line pattern.	May 16, 2012	
AgGu-184	0025	Surface	1	Semi-porcelain fragment. Partial maker's mark. Possible Bishop & Stonier Ltd. 1899-1936	May 16, 2012	
AgGu-184	0026	Surface	1	White Refined Earthenware fragment. Monochrome transfer print - red. 1828+	May 16, 2012	
AgGu-184	0027	Surface	1	White Refined Earthenware fragment. Monochrome transfer print - brown. 1828+	May 16, 2012	
AgGu-184	0028	Surface	3	White Refined Earthenware fragment. Monochrome transfer print - black. 1828+ 1. Rim fragment showing a daffodil, 2. body sherd showing a nature scene with a building. 3. Showing a geometric design.	May 16, 2012	
AgGu-184	0029	Surface	1	White Refined Earthenware fragment. Monochrome transfer print - blue floral design. 1828+	May 16, 2012	

PROVENIENCE				ARTIFACT DESCRIPTION	Date	lithic
Borden #	Catalogue #	Lot	# Pieces			
AgGu-184	0030	Surface	1	White Refined Earthenware fragment. Monochrome transfer print - teal floral and cross hatch design. 1828+	May 16, 2012	
AgGu-184	0031	Surface	1	White Refined Earthenware fragment. Monochrome transfer print - green floral pattern. 1828+	May 16, 2012	
AgGu-184	0032	Surface	5	White Refined Earthenware fragments. Monochrome transfer print - blue chinese patterns. 1828+	May 16, 2012	
AgGu-184	0033	Surface	1	White Refined Earthenware fragment. Hand painted red colour.	May 16, 2012	
AgGu-184	0034	Surface	1	White Refined Earthenware fragment. Monochrome transfer print - purple. 1828+	May 16, 2012	
AgGu-184	0035	Surface	1	Semi-porcelain fragment. Green bamboo and bird pattern.	May 16, 2012	
AgGu-184	0036	Surface	1	Fine porcelain fragment. Polychrome hand painted - blue, pink, light green and dark green.	May 16, 2012	
AgGu-184	0037	Surface	1	Fine porcelain fragment. White, undecorated. Unglazed.	May 16, 2012	
AgGu-184	0038	Surface	2	White Refined Earthenware fragment. Annularware. Pale blue banding, c. 1785-20th century.	May 16, 2012	
AgGu-184	0039	Surface	1	White Refined Earthenware fragment. Shell edged, even scalloped. Green. c. 1800-1835	May 16, 2012	
AgGu-184	0040	Surface	1	White Refined Earthenware fragment. Shell edged, unscaloped rim. Impressed repetitive pattern. Blue. c. 1841-1857.	May 16, 2012	
AgGu-184	0041	Surface	1	White Refined Earthenware fragment. Shell edged. Possibly scalloped, Impressed pattern. Blue. c. 1813-1834	May 16, 2012	
AgGu-184	0042	Surface	1	Porcelain fragment. Hand painted brown with black rim.	May 16, 2012	
AgGu-184	0043	Surface	1	White Refined Earthenware fragment. Pearlware. Shell edged, unscaloped rim, embossed pattern. C. 1820-1835	May 16, 2012	
AgGu-184	0044	Surface	2	White Refined Earthenware fragment. Polychrome transfer - green and pink. c. 1830+	May 16, 2012	
AgGu-184	0045	Surface	1	White Refined Earthenware fragment. Hand painted. Black stripe along rim and a green leaf on the outside.	May 16, 2012	
AgGu-184	0046	Surface	1	White Refined Earthenware fragment. Monochrom transfer print - black. Pattern on both sides. Exterior - tr	May 16, 2012	
AgGu-184	0047	Surface	1	1974 Canadian quarter.	May 16, 2012	













































































































































NRWC Stage 2  
NRWC 33 AgGv-121

SE 21  
Artifact Catalogue

Project No. 160950269

PROVENIENCE

Borden #	Catalogue #	Lot	# Pieces	ARTIFACT DESCRIPTION	Date	lithic
AgGv-121	0001	Surface	1	Preform. Broken, missing tip. L: 36mm, W: 20.5mm, T: 8mm	June 6, 2012	Onondaga chert
AgGv-121	0002	Surface	1	Flake, utilized, along dorsal surface, distal end, possible spokeshave. Heat altered. WE: 16mm	June 6, 2012	Onondaga chert
AgGv-121	0003	Surface	1	Biface, broken. Heat altered. L: 54mm, W: 30.5mm, T: 14mm.	June 6, 2012	Onondaga chert
AgGv-121	0004	Surface	5	Flakes, tertiary	June 6, 2012	Onondaga chert
AgGv-121	0005	Surface	1	Flake, secondary	June 6, 2012	Onondaga chert
AgGv-121	0006	Surface	1	Flake, secondary	June 6, 2012	Unknown chert













































































