

BORALEX

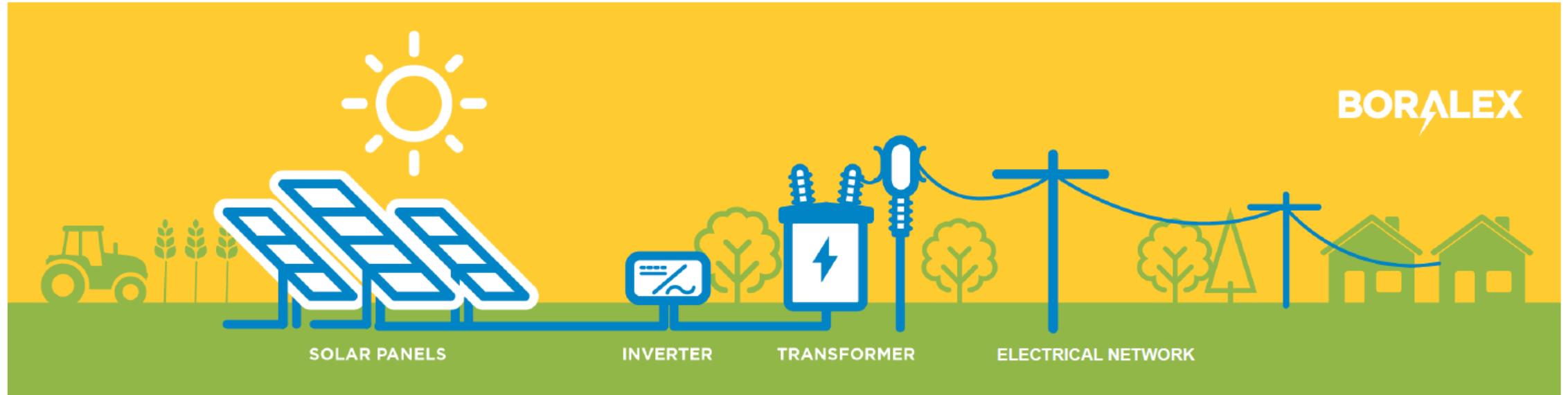


Greens Corners Solar

Virtual Public Open House
December 18, 2020

AVIGNONET-LAURAGAIS
FRANCE

How Solar Works?



- Solar panels convert light directly into a continuous electric current.
- The inverter then transforms this electricity into an alternating current compatible with the grid.
- The transformer increases the voltage of the electricity so that the energy can be introduced into the transmission or distribution grid, then to customers.

BORALEX



Greens Corners Solar

Virtual Public Open House
December 18, 2020

AVIGNONET-LAURAGAIS
FRANCE



Virtual Open House Topics

-
- Boralex Overview
 - Greens Corners Solar Environmental Overview
 - Greens Corners Solar Site Plan & Design
 - Greens Corners Project Schedule
 - 94-C Application Process Overview & Intervenor Funds
 - Questions



Boralex Overview



BORALEX AT A GLANCE



30-YEAR
EXPERIENCE

OVER 450
EMPLOYEES

WE DEVELOP,
BUILD &
OPERATE

2,246 MW
OF INSTALLED CAPACITY



BORALEX AT A GLANCE

PRESENT IN THE US MARKET FOR OVER 15 YEARS

Boralex operates seven hydropower facilities in the state of New York.

Boralex's office in South Glens Falls serves as a hub for our Operations and Development teams.



UNITED STATES

New York State

Fourth Branch	3 MW
Hudson Falls	46 MW
Middle Falls	2 MW
New York State Dam	11 MW
Sissonville	3 MW
South Glens Falls	14 MW
Warrensburg	3 MW

82 MW

total operating capacity
in New York



Over
31,200 homes
powered
annually



LOW EMISSIONS

Over
208,140 tons
of CO₂ emission
avoided annually

Boralex's Vision

As a member in your community, we understand the decisions we make help shape what our shared energy future will look like.

We are equally committed to our role as a responsible and ethical neighbor, customer, taxpayer and steward of the environment.

We engage with stakeholders early, often and broadly in informed discussions to ensure that our projects are consistent with local interests.

We grow the economies of the communities where we operate by creating community investments and purchasing goods and services locally.



Community Tour at Boralex's South Glens Falls, NY Hydro Facility

Greens Corners Solar Environmental Overview

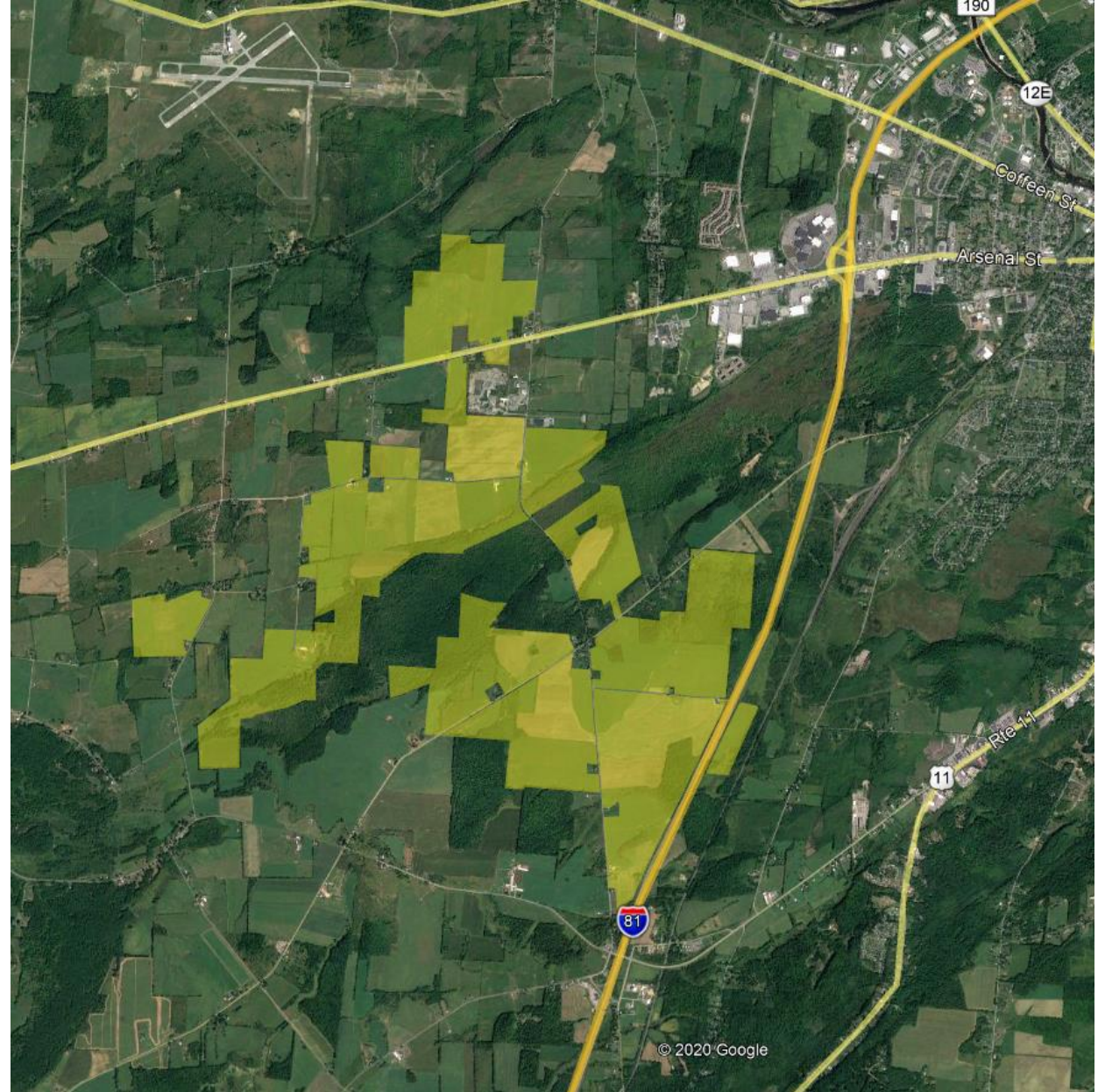


Greens Corners Solar Farm Environmental Setting

The Greens Corners Solar facility is a 120 MW ground mount solar facility proposed in the Towns of Hounsfield and Watertown, Jefferson County, NY. The facility is west of Interstate 81 and southwest of the City of Watertown. The facility is proposed as a single-axis tracker solar facility.

The facility study area consists of approximately 2,655 acres (highlighted in the map to the right). The proposed design consists of 1,110 acres of fenced-in PV areas.

The majority of the site is currently agricultural land (corn, hay, soy, cattle). The site is surrounded by residential and commercial properties, additional agricultural fields (corn, soybean, hay), Interstate Route 81, and scrub-shrub deciduous forest.



Environmental Field Inventories Performed

Wetland Surveys

Avian Studies: Winter Raptor Surveys
and Breeding Bird Surveys

Leaf-on and leaf-off Noise Campaign

Archeological SHPO Phase 1A and 1B

Geotechnical Borings and Electrical
Resistivity Testing



A wetland delineation photo from Greens Corners Solar: between Massey St and I-81 and north of Beutel Rd

Further Environmental Studies and 94-c Exhibits

- Environmental and technical studies subject to ORES technical standards.
- Final exhibits, including inventory findings, will be submitted as part of the 94-c application and will be publicly available.
- Exhibits include those listed to the right. Technical details and thresholds can be found within the 94-c regulations available from [the ORES website](#).

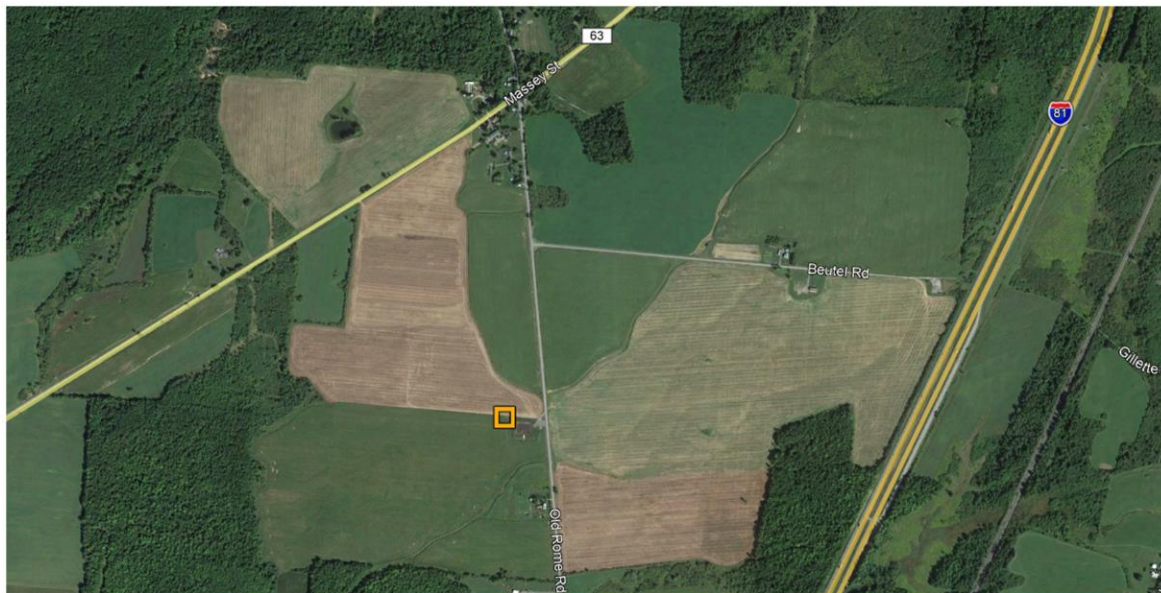


General Requirements
Overview and Public Involvement
Location of Facilities and Surrounding Land Use
Real Property
Design Drawings
Public Health and Safety and Security
Noise and Vibration
Visual Impacts
Cultural Resources
Geology, Seismology and Soils
Terrestrial Ecology
NYS Threatened or Endangered Species
Water Resources and Aquatic Ecology
Wetlands
Agricultural Resources
Effect on Transportation
Consistency with Energy Planning Objectives
Socioeconomic Effects
Environmental Justice
Effect on Communications
Electrical System Effects and Interconnection
Electric and Magnetic Fields
Site Restoration and Decommissioning
Local Laws and Ordinances
Other Permits and Approvals

On-Site MET Station

In August 2020 Boralex installed an on-site MET Station west of Old Rome State Rd (indicated with orange square on map, lower right)

The MET Station will allow Boralex to refine the anticipated energy production to be expected from the solar facility and refine our soiling estimates.



Greens Corners Solar Site Plan & Design



Summary of Proposed Greens Corners Solar Design Setbacks



Setbacks for Greens Corners Solar		
Setback Type	Regulatory Boundary Setbacks Pertaining to Substantive Law (ORES 94-c Section 900-2.6 (d))	Greens Corners Solar Proposed Setback Represented in Design
Non-participating residential property lines	100 feet	100 feet
Centerline of Public Roads	50 feet	50 feet
Non-participating property lines (non-residential)	50 feet	50 feet
Non-participating occupied residences	250 feet	350 feet
NYSDEC wetlands	100 feet	100 feet
Route 3 Arterial Corridor	N/A	500 feet



BORALEX

Greens Corners Solar Farm - 120 MW - Site Plan

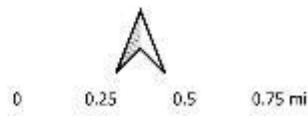
Project Areas

- Fenced Areas
- Vegetated Buffer
- Parcel Boundaries
- Proposed Setbacks
- Municipality Boundaries

Facility Components

- AC Trench
- AC Trenchless
- AC Trenchless Drill Pad
- AC Overhead
- Junction Boxes
- Inverters (44 units)
- Substation
- PV Modules
- Access Roads

Setbacks for Greens Corners Solar		
Setback Type	Regulatory Boundary Setbacks Pertaining to Subterranean Law	Greens Corners Solar Proposed Setback Represented in Design
Non-participating residential property line	100 feet	100 feet
Customers or Public Roads	30 feet	30 feet
Non-participating property line (non-residential)	30 feet	30 feet
Non-participating occupied roadbeds	150 feet	150 feet
HydroEC easements	100 feet	100 feet
Other Subterranean Corridor	N/A	300 feet



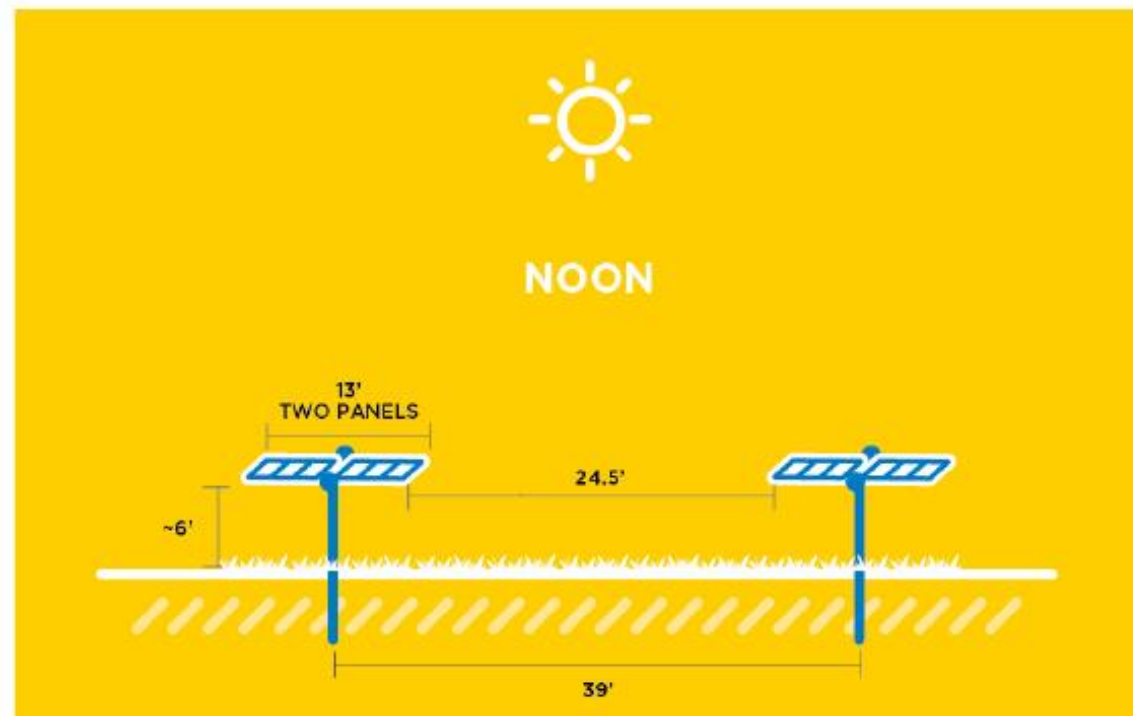
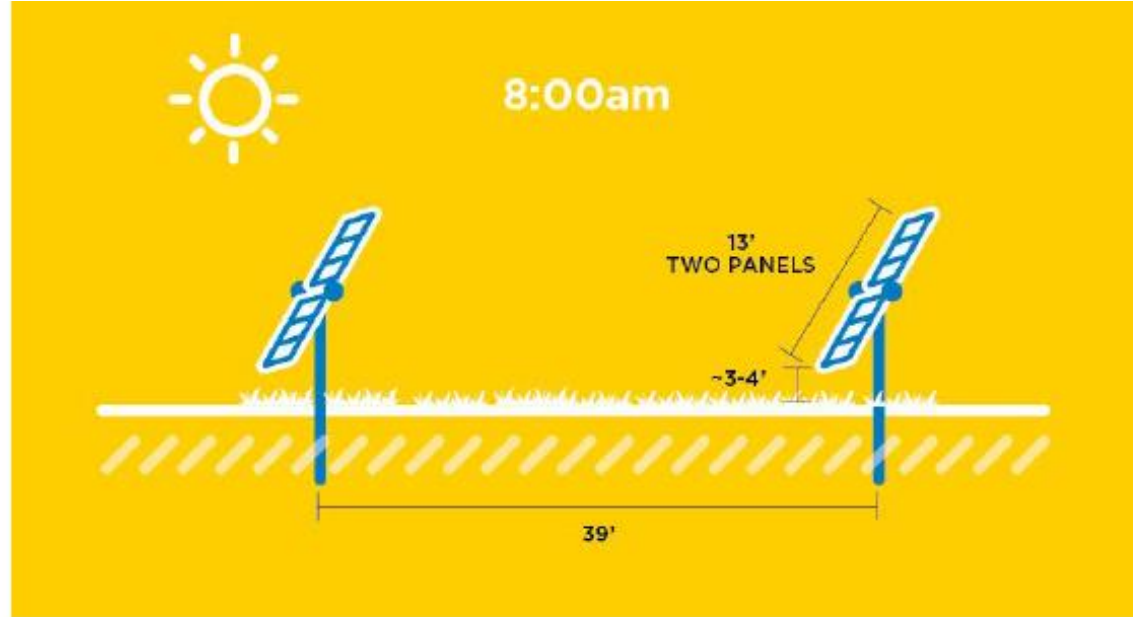
Projection : NAD83 UTM Zone 18N
 Basemaps : Google Satellite, Esri Topographic
 2020-12-10

Single Axis Tracking Solar Facilities

Rows of PV modules are orientated in north-south rows.

Rows of PV pivot on a north-south axis to track the sun over the course of the day, being table-top flat at noon.

Open space between the rows is fairly substantial, upwards of 25' depending on final project design.

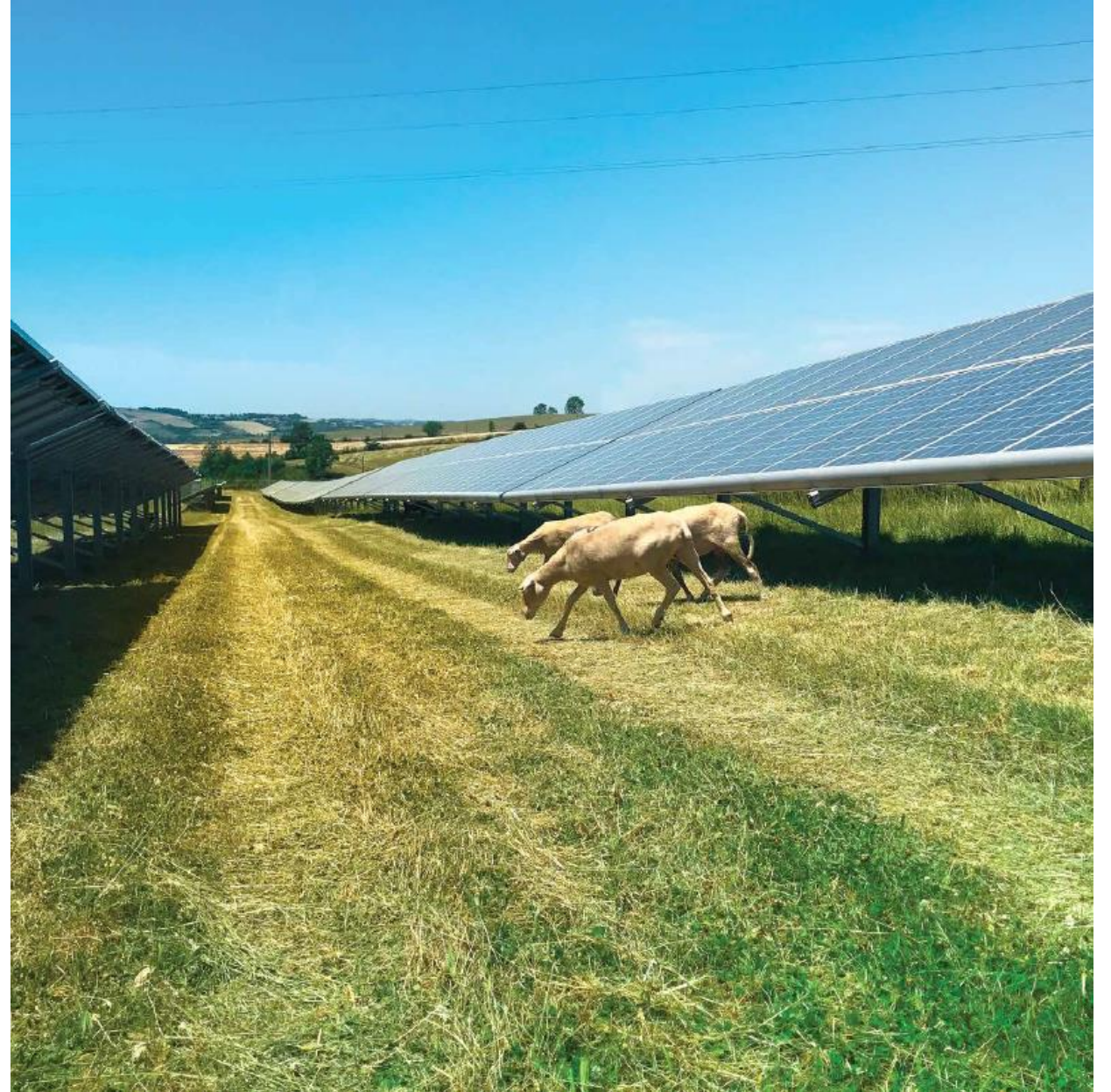


What Happens Between the Rows?

Land between the rows is either vegetated or utilized for continued agricultural activities.

Boralex has explored strategies to allow continued agricultural activities between the rows of solar panels, including:

- Animal Grazing
- Growing shade-tolerant crops
- Seeding for new pollinator habitat
- Manure injection and associated cover crops
- Creating new habitat for native species

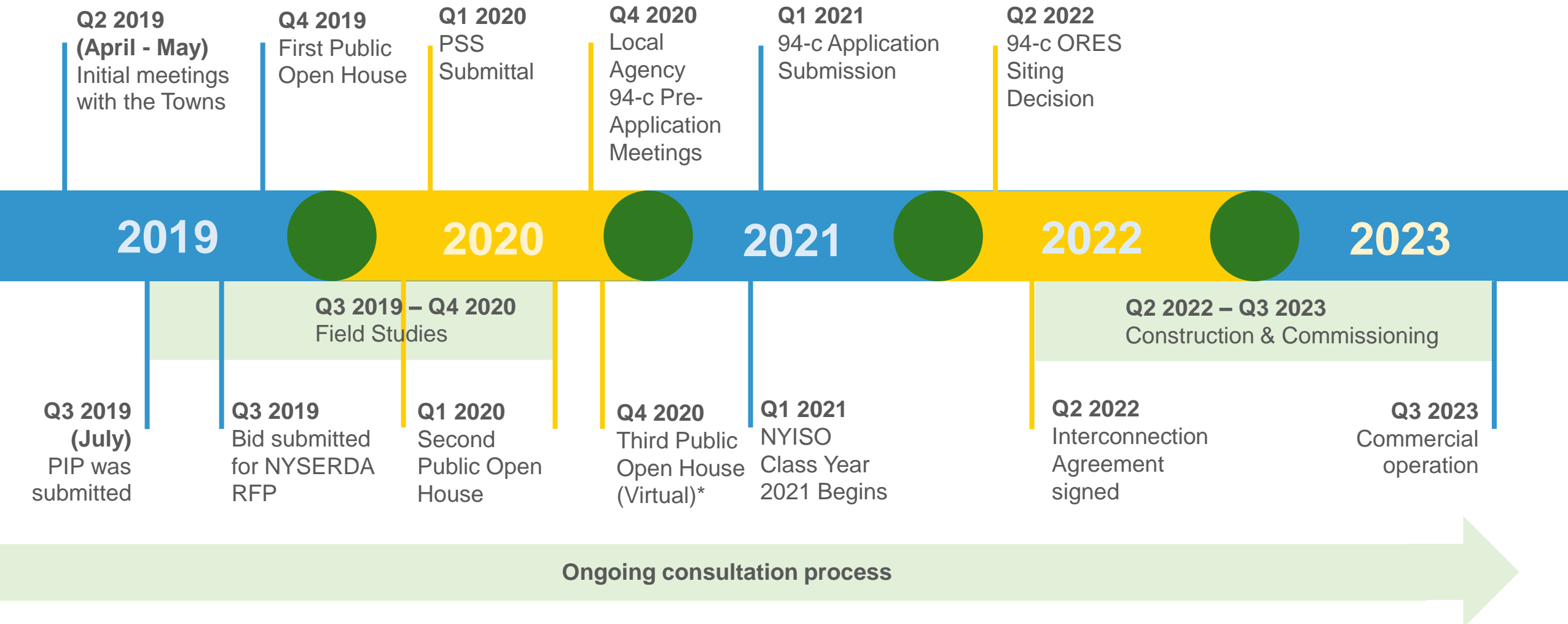


Boralex's Les Cigarettes, 10 MW solar facility in Montfort, France

Greens Corners Solar Project Schedule



Greens Corners Solar Farm Project Schedule



94-c Application Process Overview & Intervenor Funds



94-c Application Process for Greens Corners

December 7, 2020

Completion of 60-day Notice of Intent to submit 94-c Application.

March 1, 2021

(anticipated)
94-c Application Submission

Local Agency Account Request
(30 days from 94-c App Submission)

2020

2021

December 18 & 22, 2020

Third Public Open House (Virtual)*

February 24, 2021

(anticipated)
3-day Notice of Intent to submit 94-c Application



Boralex invites you to our virtual open house to learn more about the Greens Corners Solar Facility proposed in the towns of Hounsfield and Watertown.

In response to our continual discussions with the community we will present a modified project area, preliminary results from field studies and discuss our intention to submit an application to the Office of Renewable Energy Siting. We encourage all interested parties to attend one of the sessions and learn more about the project.

We look forward to meeting with you to share the project for Boralex is committed to becoming a long term partner with the towns of Hounsfield and Watertown. Our goal is to develop the Greens Corners Solar Facility in a way that respects and delivers benefits to the local community.

Notice of Intention to Submit Application

Greens Corners Solar LLC a wholly owned indirect subsidiary of Boralex Inc is seeking under 94-C of New York State Executive Law a siting permit for the Greens Corners Solar Facility, a 120 MW solar renewable energy generation facility proposed to be located in the Town of Watertown and Town of Hounsfield Jefferson County New York. Greens Corners Solar Facility is a pending Article 10 facility, but intends to submit a transfer application and/or application for siting pursuant to 94-C.

Virtual Meeting Date:

Friday, December 18th, 2020
Noon – 1:30PM
Tuesday, December 22nd, 2020
6:30 pm – 8:00 pm

Register:

Please use the following link to register for any of the public meetings:
<https://bit.ly/37pctpx>

Local Agency Account Funds

Within thirty (30) days of an application filing with ORES, any local agency or potential community intervenor may submit a request for initial funding. Such request shall be made to the Office of Renewable Energy Siting, at the Albany, New York office, Attention: Request for Local Agency Account Funding. Funds from the Local Agency Account, may be used by local agencies and potential community intervenors which meet the eligibility and procedural requirements of the law to participate in public comment periods or hearings.

Contact Information

Please feel free to contact Andrew Buckley directly with any questions, concerns, or interest in setting up a one-on-one discussion about the project:

1 (518) 538-8152

www.boralex.com/projects/greens-corners/
andrew.buckley@boralex.com



PROJECT SPONSOR

BORALEX



94-c Local Agency Account Process



- Boralex will deposit \$120,000 for the Greens Corners Solar 94-c Application towards a Local Agency Account (\$1000 per MW)
 - 75% of the Local Agency Account is reserved for local agencies
- Local Agency Account is available to local agencies and potential community intervenors
- Subject to ORES-approval, funds may be used for:
 - Defraying expenses for experts
 - Local agencies determining whether a proposed facility is designed to be sited, constructed and operated in compliance with applicable local laws and regulations.
- Any local agency or potential community intervenor shall submit a request to ORES Albany Office for initial funding within thirty (30) days of the date of application filing (packet contains details)

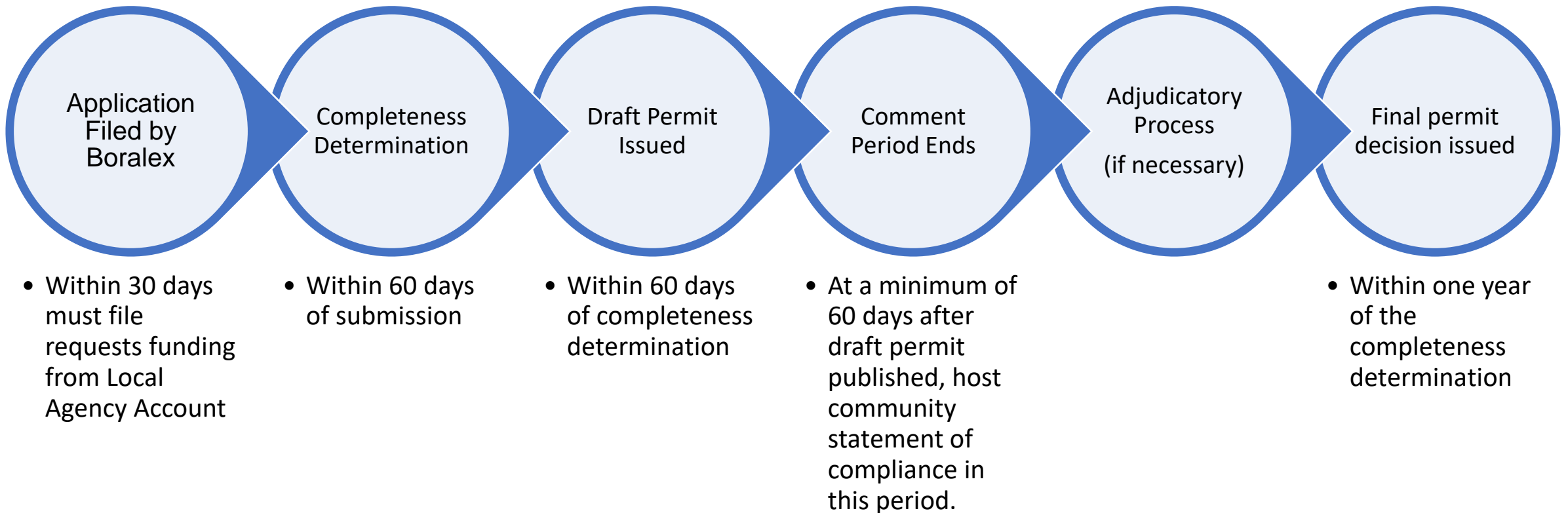
*Mailing Address for
Local Agency Funds Request:*

**Attn: Request for Local Agency
Account Funding**

**Office of Renewable
Energy Siting**

**One Commerce Plaza
99 Washington Avenue
Albany, New York 12231-001**

94-c Application Process



Questions



Questions?

Designated Contact Person

Andrew Buckley

Greenfield Development Manager

andrew.buckley@boralex.com

(518) 538-8152

39 Hudson Falls Road,
South Glens Falls, NY 12803





@BoralexInc
boralex.com